

HDM's VISTER I-Series Inverter is your complete power supply system at sea and on the road. This product uses battery power to run onboard appliances and electronics. It high surge capacity handles demanding loads. Compact and economical, the VISTER I-Series inverter is a cleaner alternative to the APU and other diesel based power systems.

VISTER IC-Series inverter/charger combination system is also available!



## Technical Specifications

Modified Sine-Wave Inverter (Non-Isolated)	
AC Output Power	(see table) (Note 1)
AC Output Surge Rating	(see table) for 1 sec
AC Output Voltage	120(+10/-20)V <sub>AC</sub>
AC Output Frequency	60(±4)Hz
DC Input Voltage Range	11 ~ 15.5V <sub>DC</sub>
No Load Current Draw	
ON state	2.5 ~ 5A <sub>DC</sub> @ 12V
Sleeping Mode	< 0.5A <sub>DC</sub> @ 12V
High Temperature Shutdown	≥ +75(±5)°C
Efficiency	> 90%
General	
Operating Temperature	-40 ~ +70°C
Storage Temperature	-40 ~ +95°C
Weight	
VISTER I-1000, I-1500	17 lbs
VISTER I-2000, I-2500, I-3000	23 lbs
Dimensions (LxWxH")	
VISTER I-1000, I-1500	7.7 x 6.5 x 10.2"
VISTER I-2000, I-2500, I-3000	12.6 x 6.5 x 10.2"
Approvals	TUV
MTBF Prediction	300,000 hrs (Note 2)
Warranty	1 year

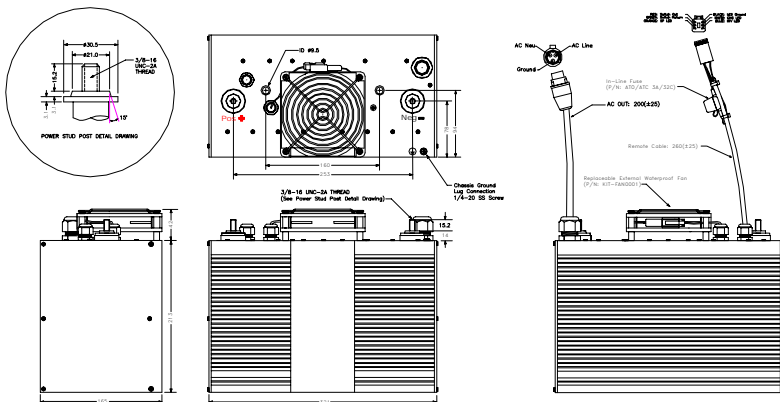
Note 1: For VISTER I-3000 inverter, 3000W for 5 min and 2500W continuous.

Note 2: Calculated per Bellcore TR-NWT-000332 method for VISTER I-2000 inverter. MTBF predictions may vary slightly from model to model.

Note 3: Thru-bolt mounting is available for VISTER I-2000, VISTER I-2500, and VISTER I-3000 inverters.

Specifications typical at 25°C unless otherwise stated and are subject to change without notice.

For custom profiles and requirements, please contact HDM Systems representatives.



Dimensions in millimeters unless otherwise specified.

Product appearance may vary by model or revision. Please consult with HDM Systems representatives.

## Industry-Leading Features

- ♦ Highest Density
- ♦ Highest Surge Capability
- ♦ Best Thermal Performance Without Derating
- ♦ Watertight (3psi) Standard Design
- ♦ Sleep Mode To Minimize Idling Drain Current (0.2A<sub>DC</sub> vs. 3-5A<sub>DC</sub>)
- ♦ Multi-Stage Output Short Circuit Protection
- ♦ Load Dump And Voltage Transient Protection
- ♦ Thru-Bolt Mounting Provides Alternative To Clamping (Note 3)
- ♦ Replaceable External Waterproof Fan

## Standard Features

- ♦ Waterproof Design
- ♦ Extruded Aluminum Case Construction
- ♦ Conforms to Group 31 Battery Configuration
- ♦ Remote On/Off Switch
- ♦ LED Status Indicators

## Inverter

- ♦ Modified Sine-Wave
- ♦ High Surge Capability
- ♦ Power Limiting
- ♦ Input Reverse Polarity Protection
- ♦ Input Low Voltage Shutdown
- ♦ Input Overvoltage Shutdown
- ♦ Output Short Circuit Protection
- ♦ Output Overvoltage Protection
- ♦ High Temperature Shutdown
- ♦ Auto-Recovery Functions
- ♦ Sleeping Mode

## VISTER I-Series

Model	Inverter	Surge
VISTER I-1000	1000W Non-Isolated	3000W
VISTER I-1500	1500W Non-Isolated	4500W
VISTER I-2000	2000W Non-Isolated	6000W
VISTER I-2500	2500W Non-Isolated	6000W
VISTER I-3000	3000W Non-Isolated	6000W

Add suffix after model name for optional accessories.

-FC	FC200DC Power Line Filter
-FC2	FC250DC Power Line Filter